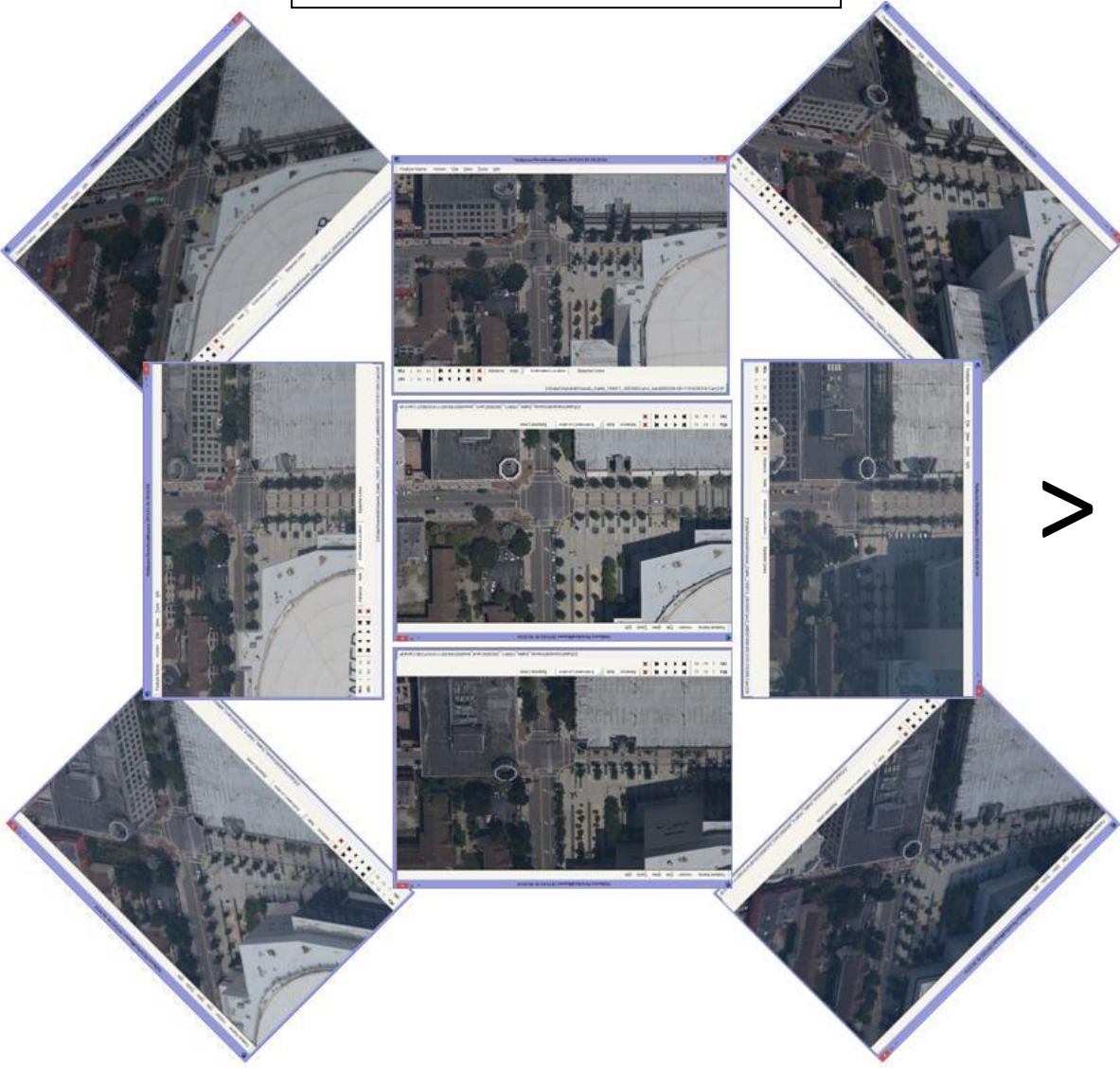
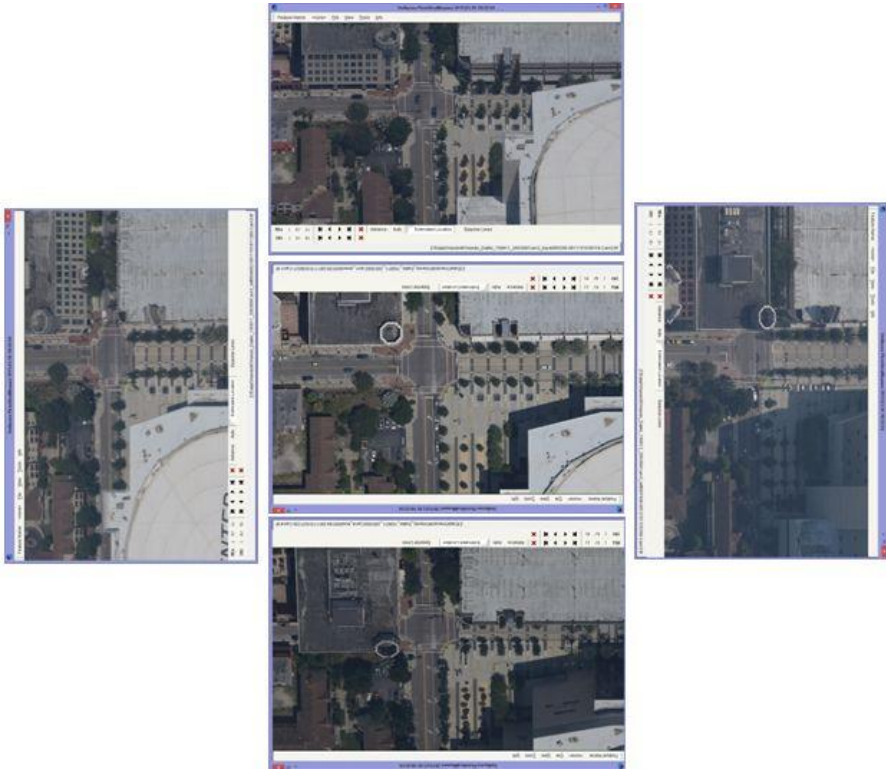


9 Looks from Octoblique MIDAS



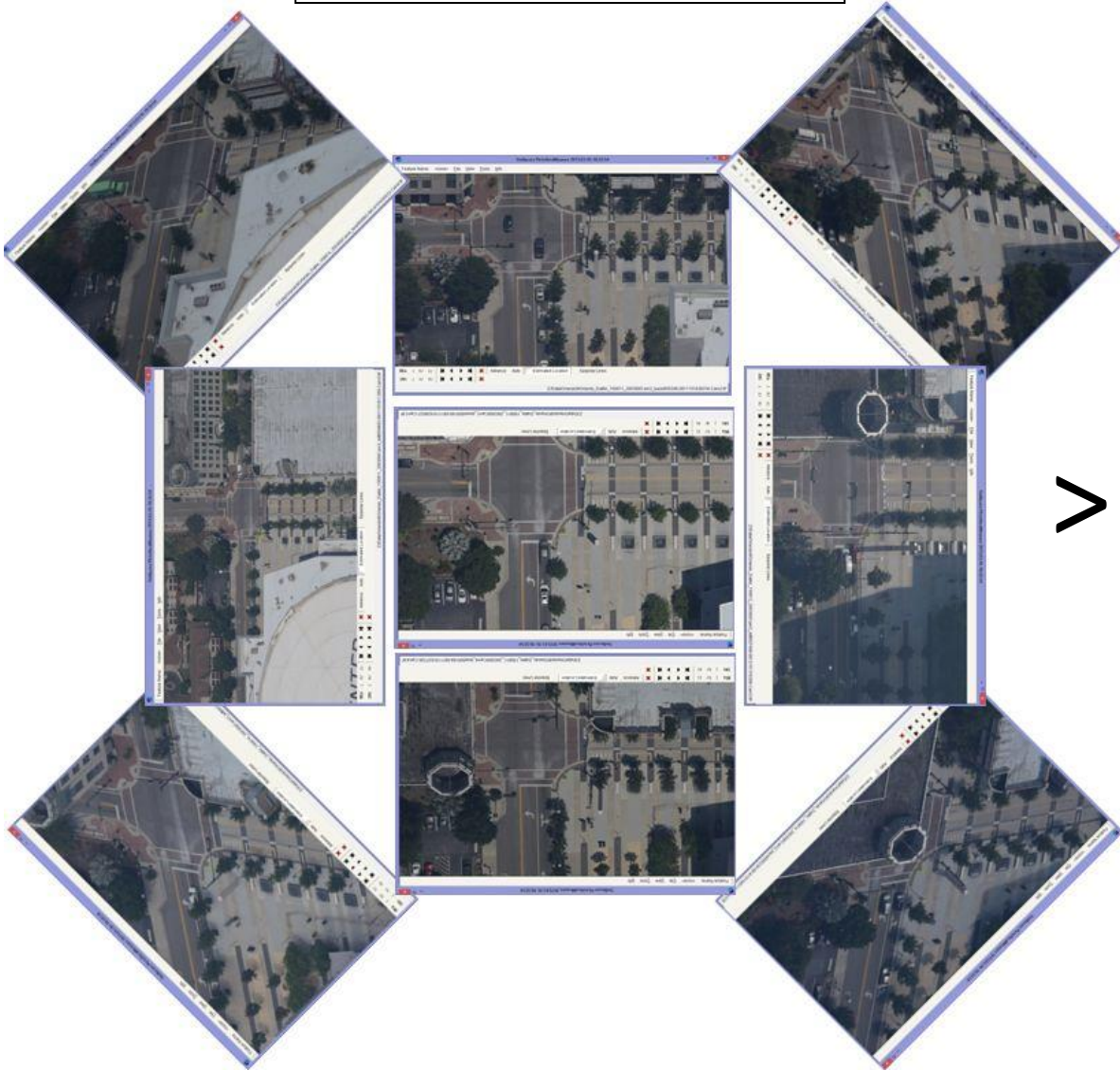
5 Looks from conventional Oblique sensor system



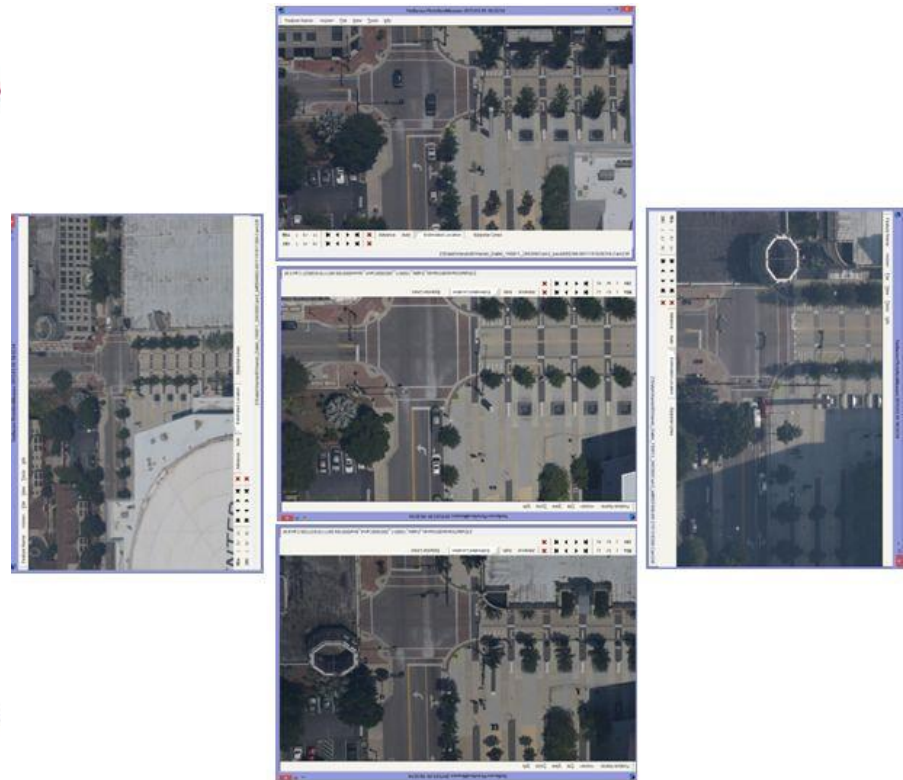
>

* Data from initial Octoblique test missions
* Imagery as captured e.g. no post capture enhancements applied
* Mission data processed via Stellacore Solutions PictoVera
* Octoblique MIDAS from Lead'Air

9 Looks from Octoblque MIDAS



5 Looks from conventional Oblique sensor system



>

* Data from initial Octoblque test missions
* Imagery as captured e.g. no post capture enhancements applied
* Mission data processed via Stellacore Solutions PictoVera
* Octoblque MIDAS from Lead'Air