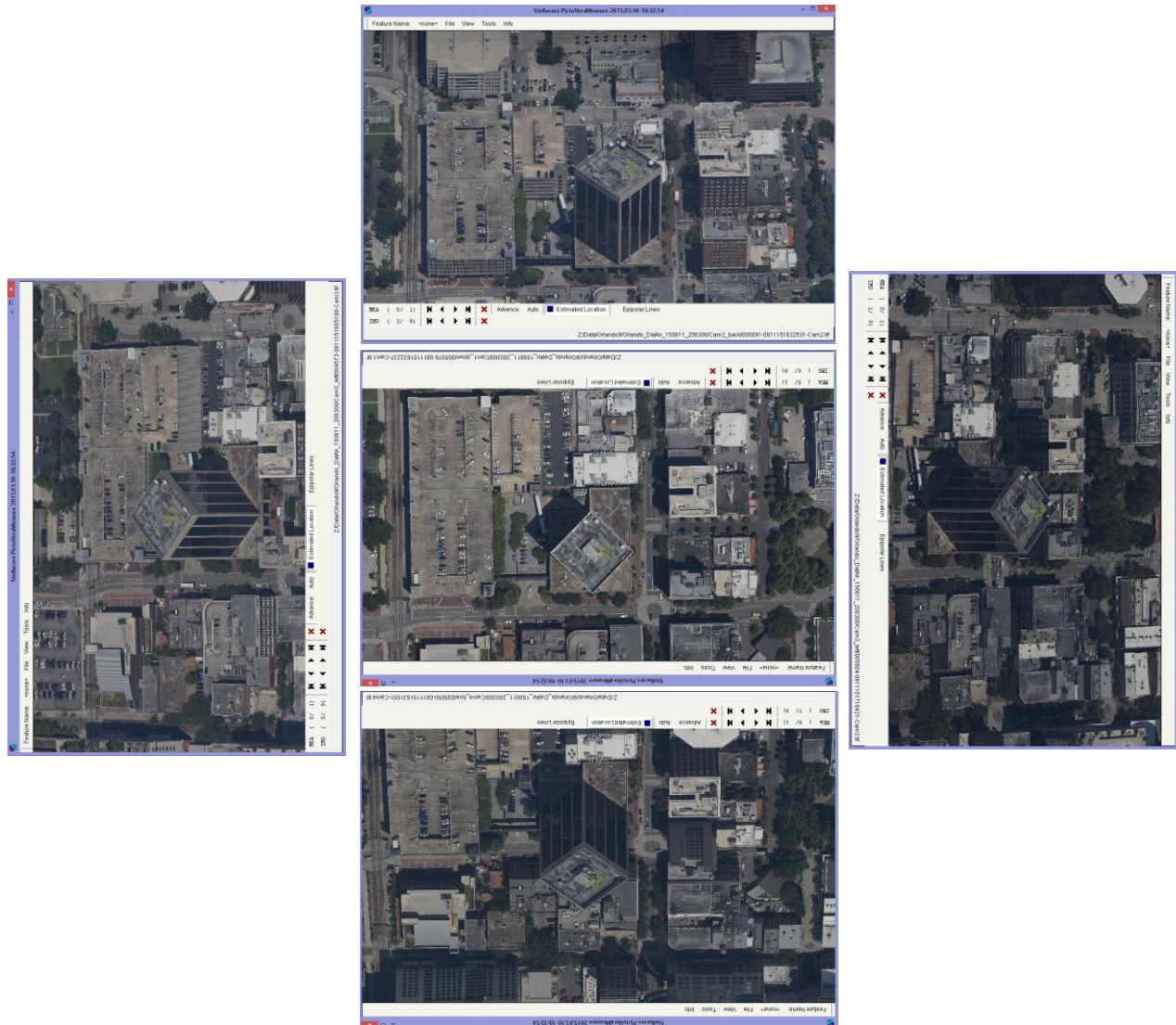


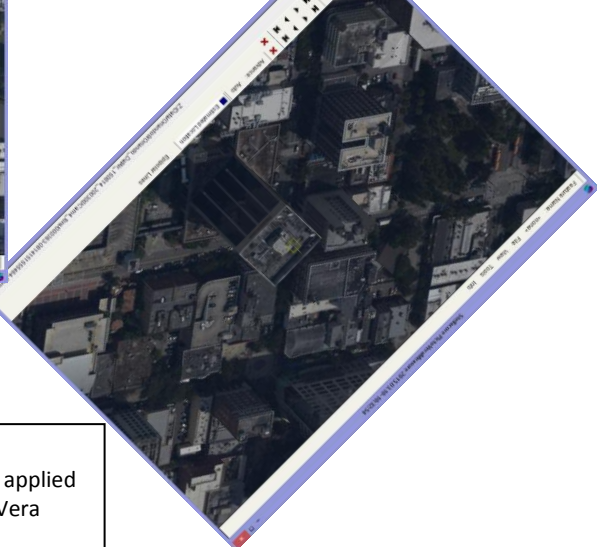
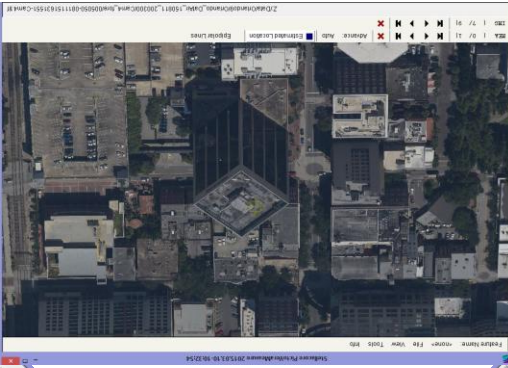
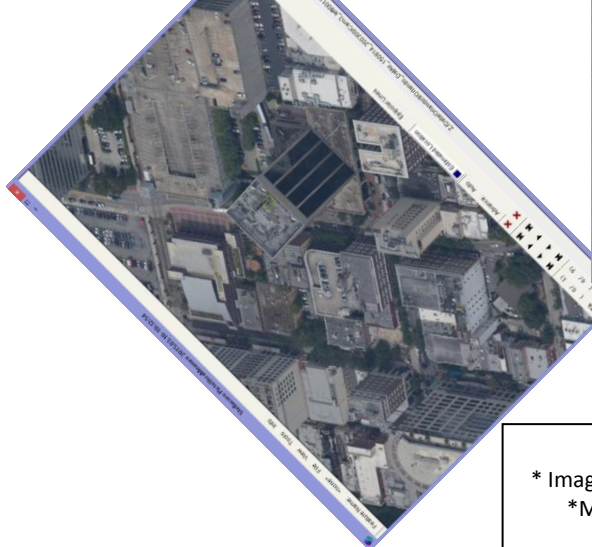
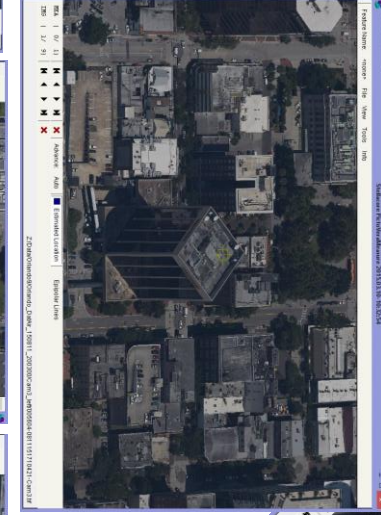
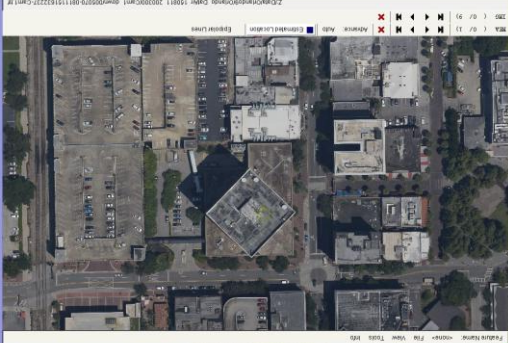
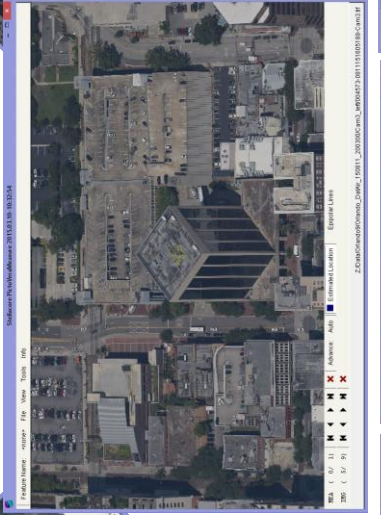
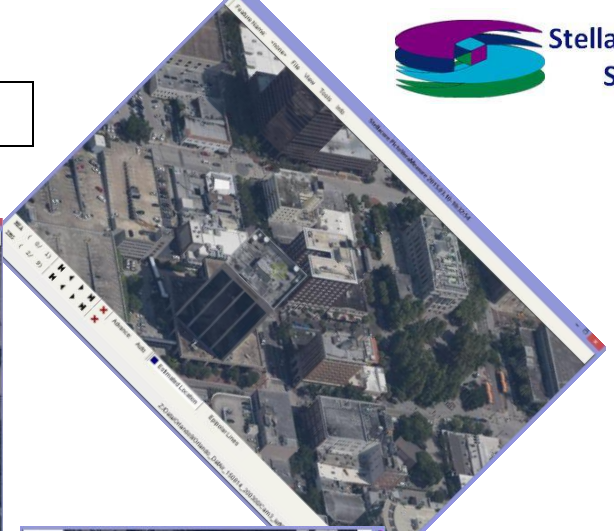
# Aerial Captured Reality - 9 is Greater than 5 (50mm GSD, 2,200m HAG)

5 Looks from conventional Oblique sensor system



\* Data from initial Octoblque test missions  
 \* Imagery as captured e.g. no post capture enhancements applied  
 \* Mission data processed via Stellacore Solutions PictoVera  
 \* Octoblque MIDAS from Lead'Air

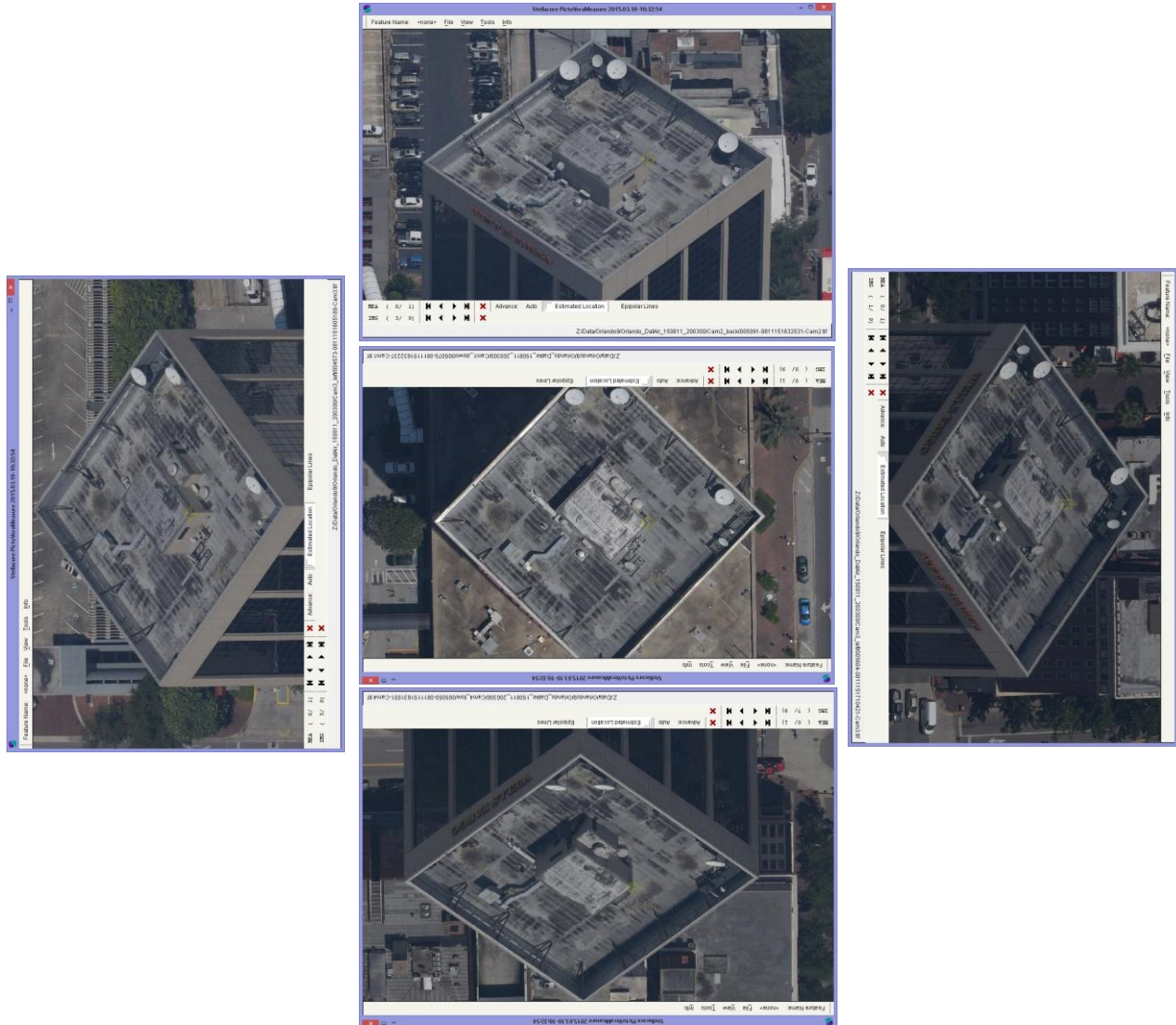
# 9 Looks from Octoblisque MIDAS



\* Data from initial Octoblisque test missions  
\* Imagery as captured e.g. no post capture enhancements applied  
\* Mission data processed via Stellacore Solutions PictoVera  
\* Octoblisque MIDAS from Lead'Air

# Aerial Captured Reality - 9 is Greater than 5 (50mm GSD, 2,200m HAG)

5 Looks from conventional Oblique sensor system



\* Data from initial Octoblque test missions  
 \* Imagery as captured e.g. no post capture enhancements applied  
 \* Mission data processed via Stellacore Solutions PictoVera  
 \* Octoblque MIDAS from Lead'Air

# 9 Looks from Octoblque MIDAS



\* Data from initial Octoblque test missions  
\* Imagery as captured e.g. no post capture enhancements applied  
\* Mission data processed via Stellacore Solutions PictoVera  
\* Octoblque MIDAS from Lead'Air