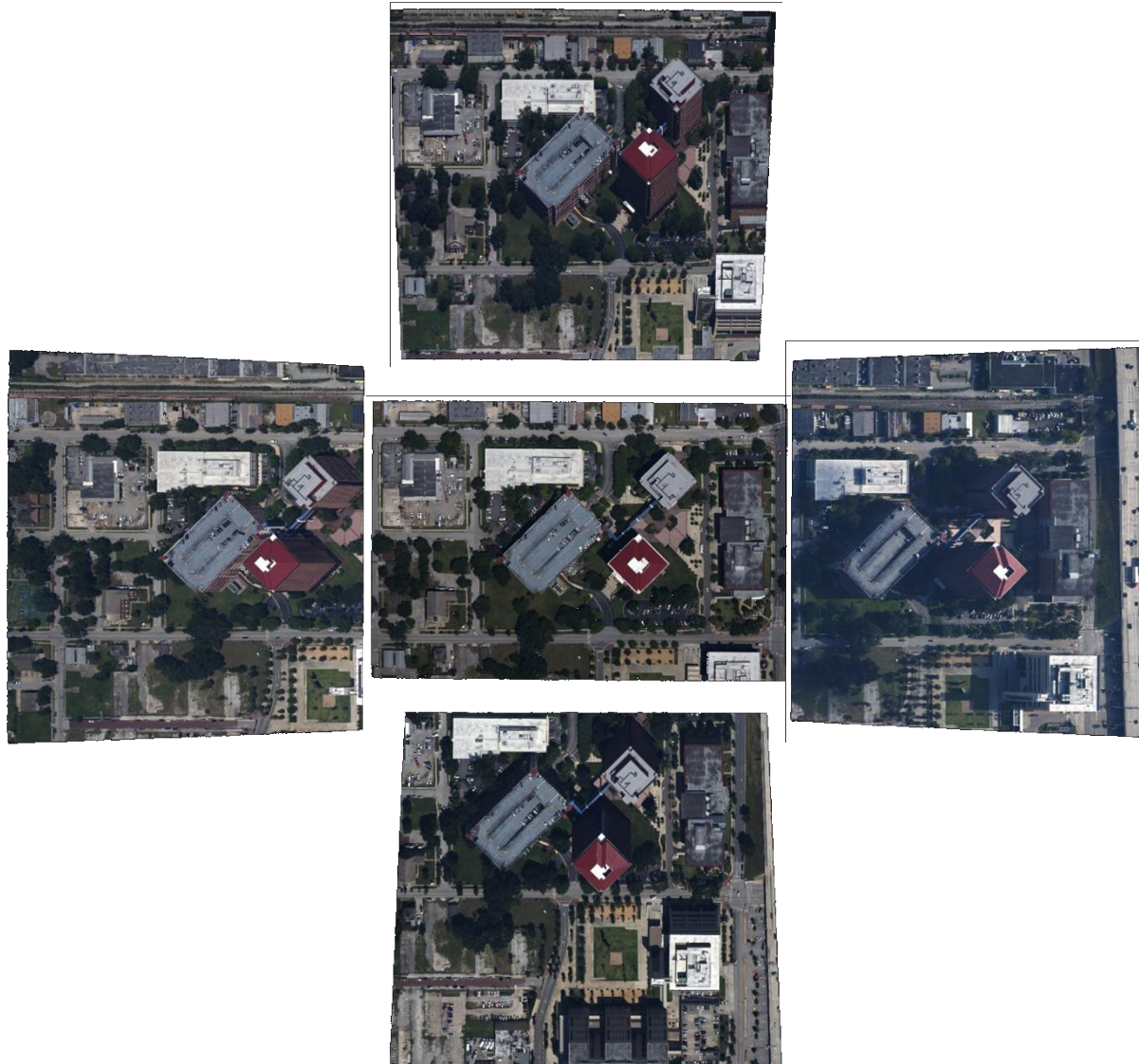
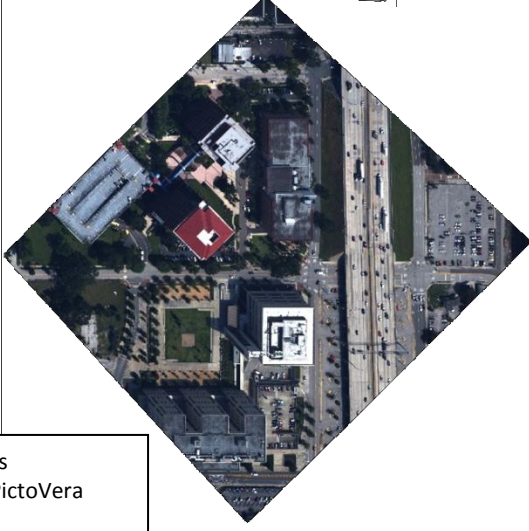
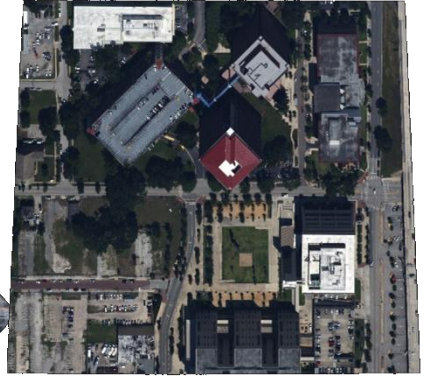
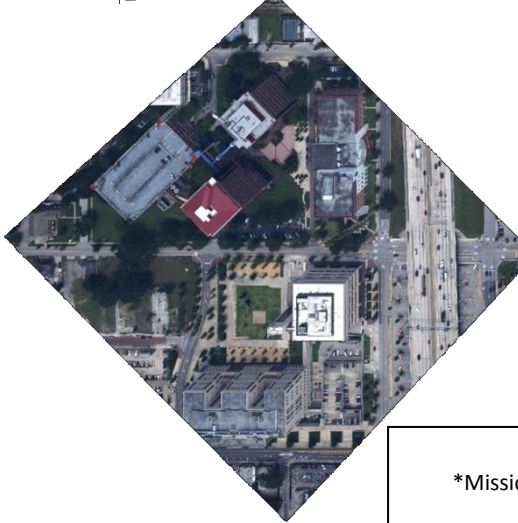
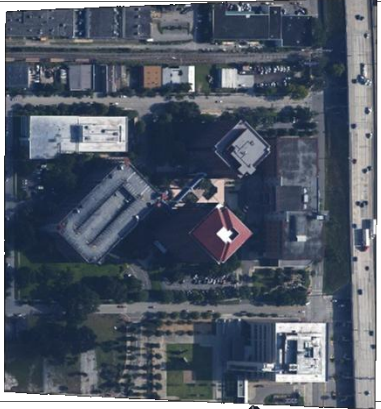
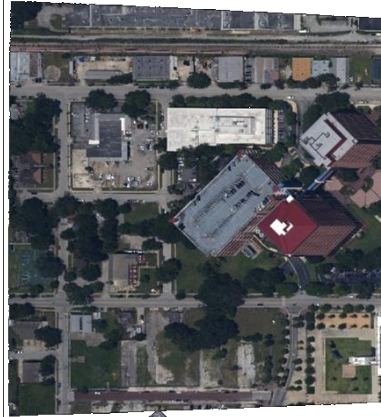
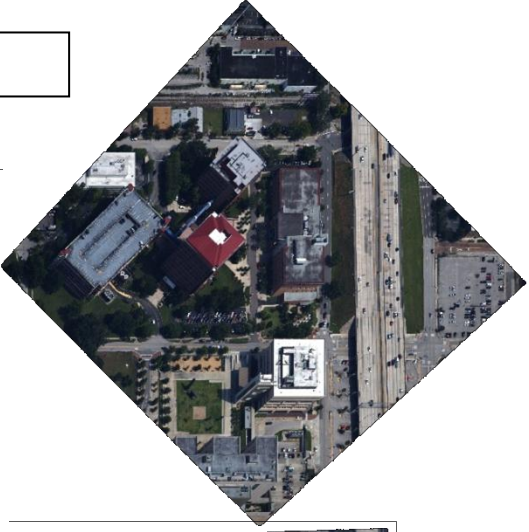
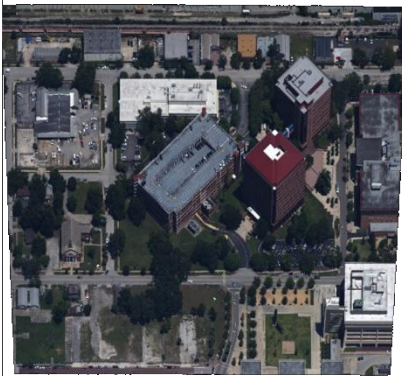
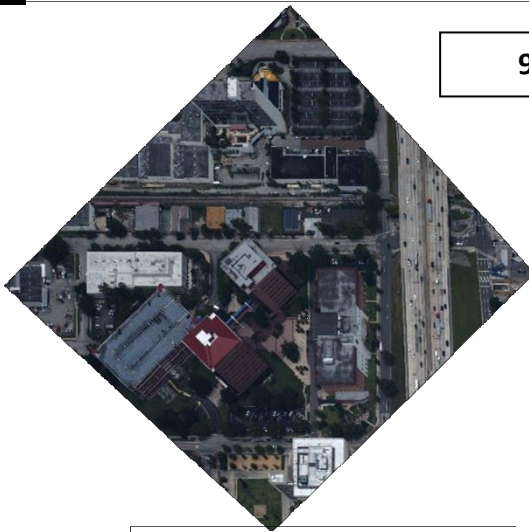


5 Looks from conventional Oblique sensor system



* Data from initial Octoblque test missions
*Mission data processed via Stellacore Solutions PictoVera
*Octoblque MIDAS from Lead'Air

9 Looks from Octoblique MIDAS



* Data from initial Octoblique test missions
* Mission data processed via Stellacore Solutions PictoVera
* Octoblique MIDAS from Lead'Air